

Making your support needs a priority. Together.

A guide to the personalized support resources available from Pfizer Oncology Together™



EXPLORE WHAT'S POSSIBLE.

XALKORI is a prescription medicine used to treat people with non-small cell lung cancer (NSCLC) that has spread to other parts of the body and is caused by a defect in either a gene called ALK (anaplastic lymphoma kinase) or a gene called ROS1. It is not known if XALKORI is safe and effective in children.

Please see Important Safety Information on pages 5-6.
Click for the [full Prescribing Information](#) and [Patient Information](#) or visit XALKORI.com.



*Making your support needs a priority. **Together.***

At Pfizer Oncology Together, we treat your individual needs as a priority. We'll help you identify financial assistance options so you can get your prescribed XALKORI® (crizotinib). We'll also connect you with a dedicated Care Champion who has social work experience and can provide resources that may help with some of your day-to-day challenges. Because when it comes to support, we're in this together.

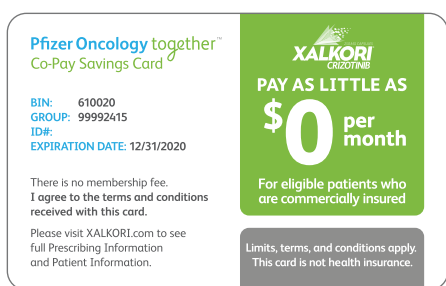
FOR LIVE, PERSONALIZED SUPPORT

Call **1-877-744-5675** (Monday–Friday 8 AM–8 PM ET) or Visit **PfizerOncologyTogether.com**

Financial Assistance

Learning about financial assistance. Together.

Finding ways to save on your medicine can be confusing. But it may be easier if you're able to research options together. Pfizer Oncology Together can help you understand your insurance and identify what financial support may be available for your XALKORI prescription. In addition, we can help find a specialty pharmacy that can fill your prescription.



COMMERCIALLY INSURED

Resources for eligible commercial, private, employer, and state health insurance marketplace patients:

- Co-pay assistance: Eligible, commercially insured patients may pay as little as \$0 per month for XALKORI.* There are no income requirements, forms, or faxing to enroll

*Limits, terms, and conditions apply. Patients are not eligible to use this card if they are enrolled in a state or federally funded insurance program, including but not limited to Medicare, Medicaid, TRICARE, Veterans Affairs health care, a state prescription drug assistance program, or the Government Health Insurance Plan available in Puerto Rico. Patients may receive up to \$25,000 in savings annually. **The offer will be accepted only at participating pharmacies. This offer is not health insurance.** No membership fees apply. Pfizer reserves the right to rescind, revoke, or amend this offer without notice. For full Terms and Conditions, please see PfizerOncologyTogether.com/terms. For any questions, please call 1-877-744-5675, visit PfizerOncologyTogether.com/terms or write: Pfizer Oncology Together Co-Pay Savings Program, 2250 Perimeter Park Drive, Suite 300, Morrisville, NC 27560.

MEDICARE/GOVERNMENT INSURED

Help identifying resources for eligible patients with Medicare/Medicare Part D, Medicaid, and other government insurance plans:

- Assistance with searching for support from independent charitable foundations: These foundations exist independently of Pfizer and have their own eligibility criteria and application processes. Availability of support from the foundations is determined solely by the foundations
- Financial assistance through Extra Help, a Medicare Part D Low-Income Subsidy (LIS) program
- Free medicine[†]

UNINSURED

Help identifying resources for eligible patients without any form of healthcare coverage:

- Help finding coverage
- Free medicine through the Pfizer Patient Assistance Program, or at a savings through the Pfizer Savings Program[‡]



[†]If support from independent charitable foundations or Medicare Extra Help is not available, Pfizer Oncology Together will provide eligible patients with medication for free through the Pfizer Patient Assistance Program. The Pfizer Patient Assistance Program is a joint program of Pfizer Inc. and the Pfizer Patient Assistance Foundation™. The Pfizer Patient Assistance Foundation is a separate legal entity from Pfizer Inc. with distinct legal restrictions.

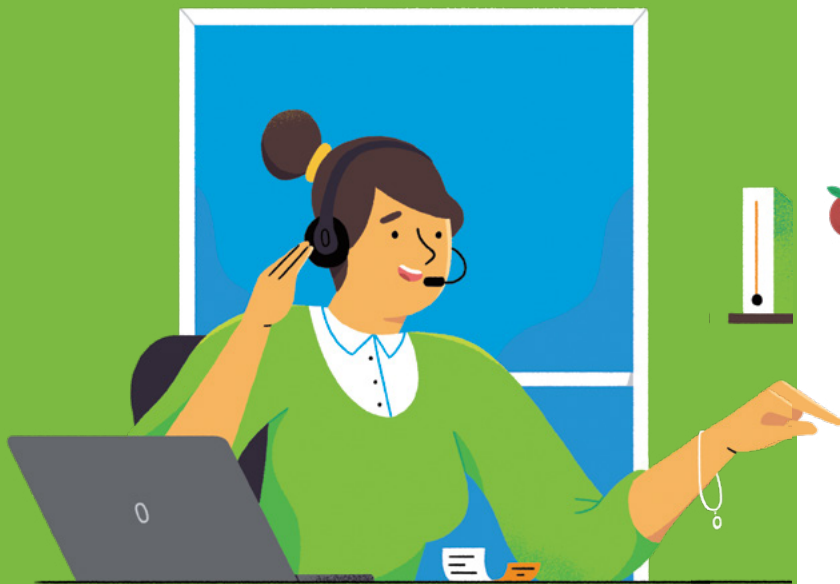
[‡]The Pfizer Savings Program is not health insurance. For more information, call the toll-free number 1-877-744-5675. There are no membership fees to participate in this program. Estimated savings are 50% and depend on such factors as the particular drug purchased, amount purchased, and the pharmacy where purchased.

XALKORI® (CRIZOTINIB) PERSONALIZED PATIENT SUPPORT

■ Personalized Patient Support

Finding resources for your day-to-day. Together.

Managing day-to-day life after diagnosis can be overwhelming, but you don't have to do it alone. With Pfizer Oncology Together, you'll have a dedicated Care Champion who has social work experience. Your Care Champion will talk with you one-on-one in order to provide you with resources to help with some of the day-to-day challenges you may be facing.*



*Some services are provided through third-party organizations that operate independently and are not controlled by Pfizer. Availability of services and eligibility requirements are determined solely by these organizations.



EMOTIONAL SUPPORT

Find resources for emotional support and other daily challenges. These resources include support groups, an independent organization's helpline, and a free app designed to help you connect with loved ones.

TRANSPORTATION AND LODGING

Connect to an independent organization that helps eligible patients find rides and lodging for treatment-related appointments.



ONGOING EDUCATION

Get guidance on living with your condition, including nutritional information, communication tips, and toolkits specific to your prescribed medicine.

WORKPLACE GUIDANCE

Receive information to help you prepare for leaving or returning to work after being diagnosed.

FINANCIAL SUPPORT

Get help identifying financial assistance resources—regardless of your insurance coverage.



FOR LIVE, PERSONALIZED SUPPORT
Call **1-877-744-5675** (Monday–Friday 8 AM–8 PM ET)

VISIT
PfizerOncologyTogether.com

Please see Important Safety Information on pages 5-6.
Click for the [full Prescribing Information](#) and [Patient Information](#) or visit [XALKORI.com](#).

■ Important Safety Information

XALKORI® (crizotinib) may cause serious side effects, some of which may include:

Liver problems — XALKORI may cause life-threatening liver injury that may lead to death. Your healthcare provider should do blood tests at least every month to check your liver during treatment with XALKORI. Tell your healthcare provider right away if you get any of the following new or worsening symptoms:

- yellowing of your skin or the white part of your eyes
- severe tiredness
- dark or brown (tea color) urine
- nausea or vomiting
- decreased appetite
- pain on the right side of your stomach
- bleed or bruise more easily than normal
- itching

Lung problems (pneumonitis) — XALKORI may cause life-threatening lung problems that may lead to death. Symptoms may be similar to those symptoms from lung cancer. Tell your healthcare provider right away if you have any new or worsening symptoms, including:

- trouble breathing or shortness of breath
- cough with or without mucous
- fever

Heart problems — XALKORI may cause very slow, very fast, or abnormal heartbeats. Your healthcare provider may check your heart during treatment with XALKORI. Tell your healthcare provider right away if you feel dizzy or faint or have abnormal heartbeats. Tell your healthcare provider if you take any heart or blood pressure medicines.

Vision problems — Vision problems are common with XALKORI. These problems usually happen within 1 week of starting treatment with XALKORI. Vision problems with XALKORI can be severe and may cause partial or complete loss of vision in one or both eyes. Your healthcare provider may stop XALKORI and refer you to an eye healthcare provider if you develop severe vision problems during treatment with XALKORI. Tell your healthcare provider right away if you have any loss of vision or any change in vision, including:

- double vision
- seeing flashes of light
- blurry vision
- light hurting your eyes
- new or increased floaters

Before you take XALKORI, tell your healthcare provider if you:

- have heart problems, including a condition called long QT syndrome
- have liver or kidney problems
- have vision or eye problems
- have any other medical conditions

■ Important Safety Information (continued)

Before you take XALKORI® (crizotinib), tell your healthcare provider if you:

- are pregnant, or plan to become pregnant. XALKORI can harm your unborn baby.
 - **Females** who are able to become pregnant should use effective birth control during treatment with XALKORI and for at least 45 days after the final dose of XALKORI.
 - **Males** who have female partners who can become pregnant should use condoms during treatment with XALKORI and for at least 90 days after the final dose of XALKORI.
 - Talk to your healthcare provider about birth control methods that may be right for you.
 - If you or your partner becomes pregnant, tell your healthcare provider right away.
- are breastfeeding or plan to breastfeed. It is not known if XALKORI passes into your breast milk. Do not breastfeed during treatment with XALKORI and for 45 days after the final dose. Talk to your healthcare provider about the best way to feed your baby during this time.

Tell your healthcare provider about the medicines you take, including prescription medicines, over-the-counter medicines, vitamins, and herbal supplements.

You should not drink grapefruit juice or eat grapefruit during treatment with XALKORI. It may increase the amount of XALKORI in your blood to a harmful level.

The most common side effects of XALKORI include:

- vision problems
- nausea
- diarrhea
- vomiting
- swelling of your hands, feet, face, and eyes
- constipation
- increased liver function blood test results
- tiredness
- decreased appetite
- upper respiratory infection
- dizziness
- feeling of numbness or tingling in the extremities

XALKORI can cause changes in your vision, dizziness, and tiredness. If you have these symptoms avoid driving a car, using machinery, or doing anything that needs you to be alert.

XALKORI may cause decreased fertility. In females, this could affect your ability to become pregnant. In males, this could affect your ability to father a child.

These are not all of the possible side effects of XALKORI. For more information, ask your healthcare provider or pharmacist.

Call your doctor for medical advice about side effects. You may report side effects to the FDA at 1-800-FDA-1088.

To learn more about XALKORI® (crizotinib),
visit **XALKORI.com**.



PP-XLK-USA-0825 © 2019 Pfizer Inc. All rights reserved. December 2019
XALKORI® is a registered trademark of Pfizer Inc.

Please see Important Safety Information on pages 5-6.
Click for the [full Prescribing Information](#) and [Patient Information](#) or visit [XALKORI.com](#).